

## BXQ51

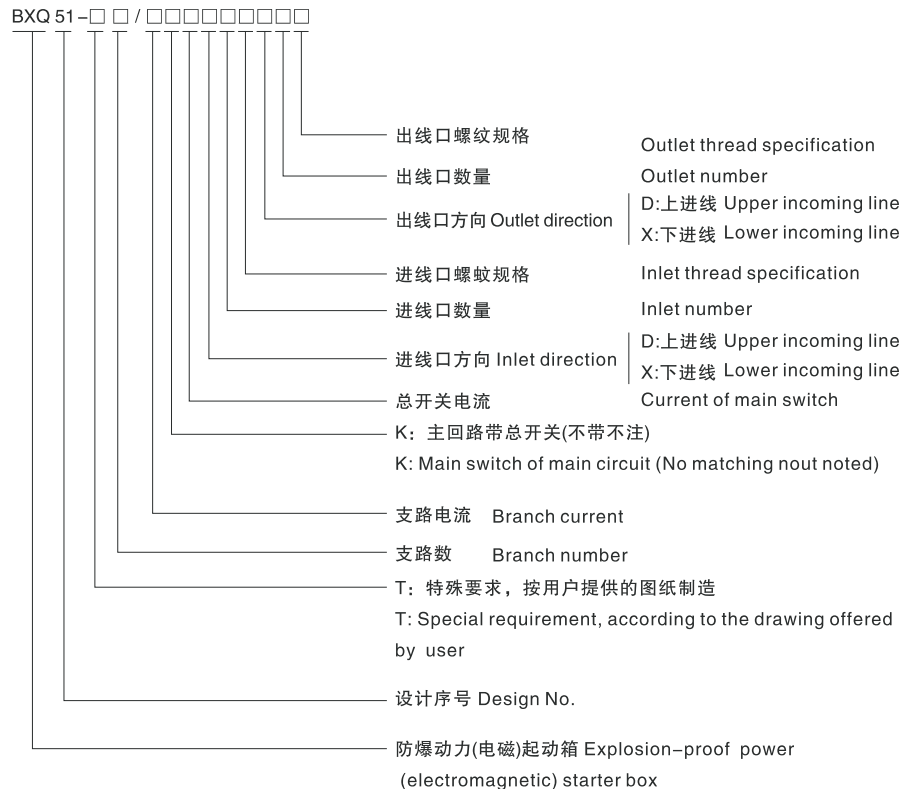
系列防爆动力(电磁)起动箱(II B、II C)



### 适用范围 Application

- 适用于1区、2区危险场所。
- 适用于II A、II B、II C类，温度组别为T1~T6的爆炸性气体环境。
- Can be used in hazardous areas: Zone 1 and Zone 2
- Can be used in explosive gas atmospheres of Category IIA、IIB and、II C where the temperature classification is T1 ~ T6.

### 型号含义 Model implication



## BXQ51

Type explosion-proof power  
(electromagnetic) starter box (II B, II C)

### 技术参数 Technical parameters

- |  |   |
|--|---|
| <ul style="list-style-type: none"> <li>■ 执行标准: GB 3836.1、GB 3836.2、GB 3836.3、IEC60079</li> <li>■ 回路数: 2、3、4、6、8、</li> <li>■ 额定电压: AC 380V</li> <li>■ 总开关电流: ≤400A</li> <li>■ 支路电流: ≤160A</li> <li>■ 防爆标志: Exde II BT6、*Exde II CT6</li> <li>■ 防护等级: IP54、*IP65</li> <li>■ 防腐等级: WF1</li> <li>■ 引入口螺纹规格: G1/2"~G3"</li> </ul> | <ul style="list-style-type: none"> <li>■ Implementing the standard : GB 3836.1、GB 3836.2、GB 3836.3、IEC60079</li> <li>■ Circuit number: 2、3、4、6、8</li> <li>■ Rated voltage: AC 380</li> <li>■ Main current: ≤400A</li> <li>■ Branch current: ≤160A</li> <li>■ Explosion-proof mark: Exde II BT6、*Exde II CT6</li> <li>■ Protection grade: IP54、*IP65</li> <li>■ Explosion-proof class: WF1</li> <li>■ Inlet thread specification: G1/2"~G3"</li> </ul> |
|--|---|

### 产品特点 Features

- |  |   |
|--|---|
| <ul style="list-style-type: none"> <li>■ 壳体采用ZL102铝合金压铸成型，表面高压静电喷塑；</li> <li>■ 本产品内装元件也可由用户选配元件，根据用户要求进行特殊设计；</li> <li>■ 可带有总开关，具有过载、短路保护功能；</li> <li>■ 可实现本地或远程操作；</li> <li>■ 电缆或钢管布线。</li> </ul> | <ul style="list-style-type: none"> <li>■ The housing is die cast in aluminum alloy, with high voltage static plastic-sprayed surface.</li> <li>■ Inner components can be selected by user, special design according to user's request.</li> <li>■ Equipped with chief switch, having protections of overload, short circuit.</li> <li>■ Local or remote control is available, or in two different places.</li> <li>■ Conduit wiring or cable wiring.</li> </ul> |
|--|---|

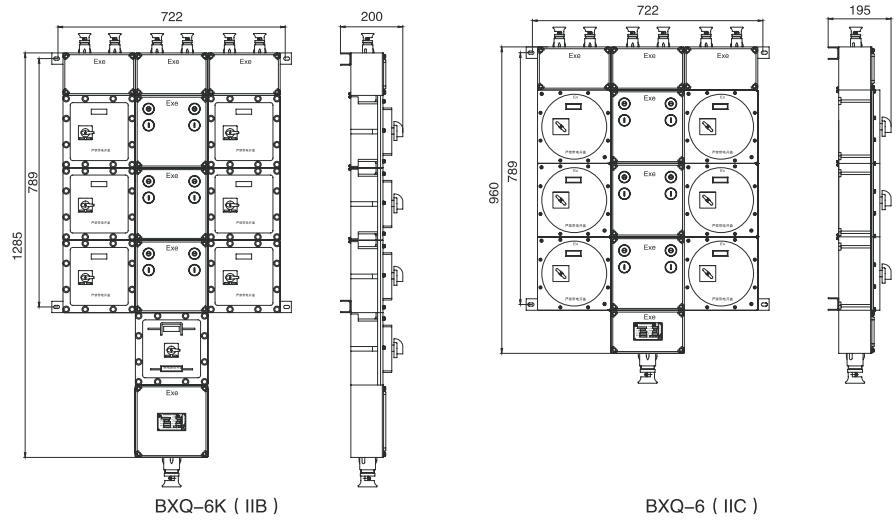
### 产品结构 Structure of product

规格 Specification	内装元件 Inner components	结构类型 Structure type	备注 Remark
支路电流小于63A Branch current not more than 63A	小型断路器、交流接触器、万能转换开关、热继电器。 *可根据要求加装，电流表和互感器。 MCB, AC Contactor Selector, thermal relay. Possible to add ammeter and CT as required.	采用模块式结构，实现多回路自由组合。 Modular structure, multi circuits can be freely combined.	进出线口数量及规格根据用户要求制定。 Inlet number and specification are determined by user.
支路电流大于63A Branch current more than 63A	塑壳式断路器、交流接触器、万能转换开关、热继电器。 MCCB, AC Contactor Selector, thermal relay.	采用大壳体组合。 Big enclosure combined.	

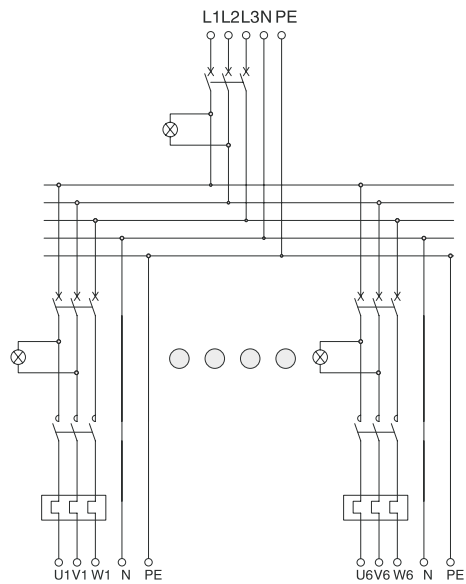
## BXQ51

系列防爆动力(电磁)起动箱(II B、II C)

### 外形及安装举例 Outline and mounting example

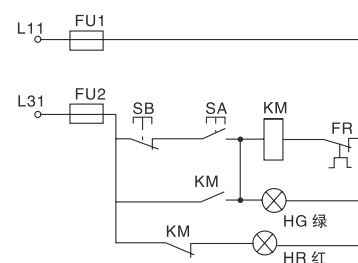
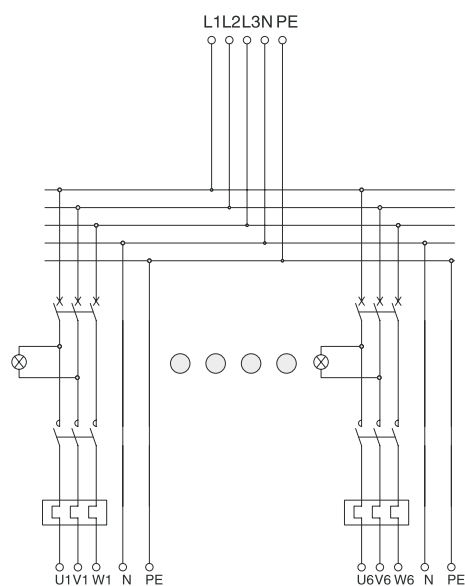


### 电器原理图 Electrical principle chart



## BXQ51

Type explosion-proof power  
(electromagnetic) starter box (II B, II C)



共同控制回路图  
Sketch of together-controlled circuit

### 订货须知 Not ice if ordering

- 用户订货时应注明起动箱的回路数，各回路相应的电流以及断路器的极数，若需带漏电功能，则还需注明
- 如需带总开关则请注明总开关的电流及极数，并注明进出线方向，进出线螺纹规格及相应的数量。
- When placing an order, please indicate the circuit number of distribution box, corresponding current of each circuit, pole number of circuit breaker and so on, and give indication if need earth leakage protection function;
- If need mains switch, please indicate the current and pole number as well as incoming/outgoing lines' direction and thread specification and corresponding number;